

MISSION

Our Latest CMOC Deployments

ISSUE NO. 04

»»» **READY**



TABLE OF CONTENTS

03 IREDELL COUNTY, NC

Mobile Command Unit

04 [CONFIDENTIAL INTERNATIONAL CUSTOMER]

Drone Transport Vehicle

05 U.S. ARMY REDSTONE TEST CENTER

(2) MOSAIC Test + Measurement Modules

06 JT4 LLC

Telemetry Acquisition Trailer

07 U.S. ARMY CORPS OF ENGINEERS

Emergency Command and Control Vehicle

08 [CONFIDENTIAL CUSTOMER]

RF Monitoring, Direction Finding, & Analysis Vehicle

09 CHEROKEE NATION

Mobile Command Post

10 FEMA

(3) Mobile Communications Office Vehicles (MCOV)

11 [CONFIDENTIAL INTERNATIONAL CUSTOMER]

Drone Transport Vehicle

12 SCHOOL-BASED HEALTH CENTER

Mobile Medical Vehicle

13 JT4 LLC

Telemetry Control Vehicle

14 ALABAMA EMERGENCY MANAGEMENT AGENCY

Mobile Command Vehicle

15 VERIZON

Incident Response Team Vehicle

Additional projects shipped this quarter but not featured in this issue:

- JT4 LLC // (5) IC14 Test + Evaluation Vehicles
- [Confidential Customer] // (2) Toyota Tacoma Pickup Trucks
- San Diego County // Mobile Command Vehicle

IREDELL COUNTY, NC

MOBILE COMMAND UNIT



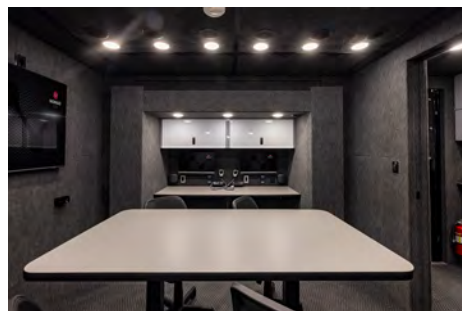
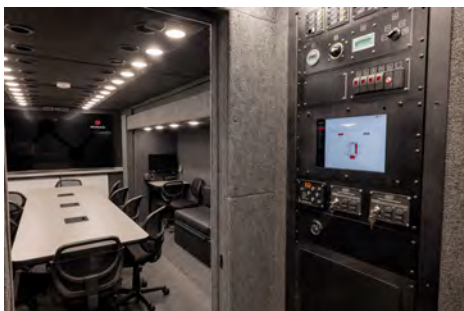
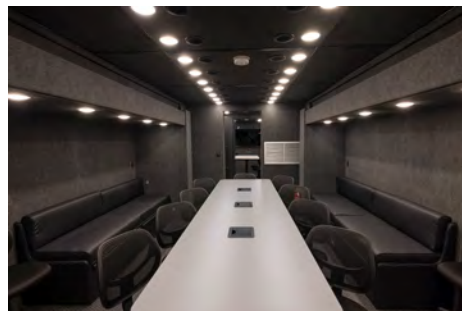
MISSION // The Iredell County, North Carolina Sheriff's Office responds to natural and human-caused disasters and emergencies. The county's Incident Management Team (IMT) required a mobile platform for command and control, with robust communications infrastructure and dedicated areas for incident management functions during incidents.

SOLUTION // Nomad GCS designed, manufactured, and integrated this Mobile Command Unit on a Peterbilt 567 chassis with automatic leveling. A 34-foot shelter with four flat-floor slideouts provides ample space for two conference tables and multiple workstations. A 42-foot pneumatic mast with surveillance camera, IT and connectivity packages, and an exterior workstation provide advanced situational awareness. Dual awnings, full galley, integrated power, and LED lighting systems ensure sustained, high-performance operations. Power, HVAC, and IT systems are managed with Nomad Total Command™ (NTC) automation.

FEATURES //

- Peterbilt 567 Chassis
- Automatic Leveling System
- 34' Shelter with 4 Flat-Floor Slideouts
- Nomad Total Command™ (NTC) Asset Automation + Control
- 42' Pneumatic Mast with Surveillance Camera
- IT and Connectivity Packages
- Exterior Workstation with Monitor
- Powertech 30kW Generator
- LED Emergency and Scene Lighting Package
- Rooftop Traffic Flow Board with Lift-Lay System
- Dual Automatic Awnings
- Galley with Microwave, Coffeemaker, and Refrigerator

Delivery Date:
9/15/2025



[CONFIDENTIAL INTERNATIONAL CUSTOMER]

DRONE TRANSPORT VEHICLE

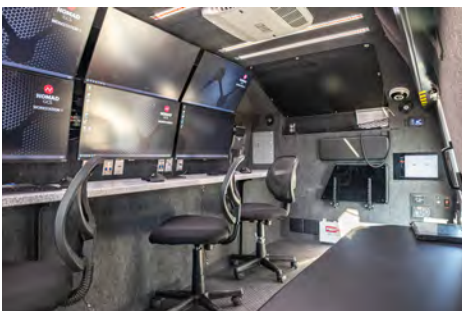


MISSION // This customer partnered on an international program to deliver a family of mobile drone platforms centered on the AeroVironment JUMP 20 UAS solution. Rugged operating terrain and tough access roads drove the need for an agile and capable UAS mobile ops platform supporting surveillance and investigation operations.

SOLUTION // Nomad GCS designed, manufactured, and integrated this rugged UAS operations platform built on a Ford F-550 4x4 chassis. With custom suspension and super single upgrades, the vehicle is engineered for challenging terrain and remote missions. Key features include integrated JUMP 20 drone storage, a 19-foot mechanical mast, Nomad Total Command™ (NTC) for systems automation, and robust power and climate control systems—all part of a multi-platform UAS ecosystem.

FEATURES //

- Ford F-550 4x4 Chassis
- Automatic Leveling System
- Custom Ruggedized Suspension with Super Single Upfit
- Nomad Total Command™ (NTC) Asset Automation + Control
- Exterior Swing-Out Briefing Monitor
- Integrated JUMP 20 Drone Storage
- 19' Mechanical Mast
- Automatic Horizontal Arm Awning
- Dual Rooftop HVAC
- PTO Generator
- Part of 12-Unit Multi-Platform Project



Delivery Date:
9/30/2025

U.S. ARMY REDSTONE TEST CENTER

MOSAIC TEST + MEASUREMENT MODULE



MISSION // The U.S. Army's Redstone Test Center (RTC) conducts missile evaluation operations in the Broad Ocean Area (BOA) test range. To meet U.S. Coast Guard (USCG) and Military Sealift Command (MSC) requirements for occupied enclosures while at sea, RTC and Nomad GCS developed unique solutions for a compliant, modular, containerized testing ecosystem.

SOLUTION // Nomad GCS designed, manufactured, and integrated two 20-foot ISO 668 containers for the RTC Modular Open System Architecture Instrumentation Container (MOSAIC) Program. These Frontend telemetry modules feature innovative, automatically opening roofs with a hydraulic lift system capable of elevating 12,000 pounds to deploy sensors and antennas. TEMPEST-compliant systems and inter-container power and network connections provide reliable, secure electrical and data sharing with other MOSAIC modules. Nomad Total Command™ (NTC) automates and monitors container functions including ABS-approved NeverDown™ power storage and management system.



FEATURES //

- Purpose-Built 20' ISO Container
- Weatherproof Retractable Roof
- Hydraulic Lift Platform for Telemetry Antenna
- TEMPEST Compliant
- Customized Nomad Total Command™ (NTC) Asset Automation + Control
- ABS-approved NeverDown™ Power Management
- Inter-Container Power and Data Connections
- LED Situational Awareness and Status Lighting
- 2-Unit Order

Delivery Date:
10/21/2025

JT4 LLC

TELEMETRY ACQUISITION TRAILER



MISSION // JT4 LLC provides engineering and technical support to multiple western United States test ranges for the U.S. Air Force, Space Force, and Navy under the Joint Range Technical Services Contract (J-Tech II). JT4 identified a requirement for Telemetry Acquisition Trailers suitable for deployment in harsh desert conditions found in the test ranges involved in their contract.

SOLUTION // Nomad GCS designed, manufactured, and integrated three Telemetry Acquisition Trailers. Built on a rugged TCT-HD dual-axle aluminum chassis and engineered to meet Air Transportability Test Loading Activity (ATTLA) requirements, the trailers are purpose-built for harsh desert environments. Key capabilities include lift-and-lay telemetry antenna systems, 30-foot pneumatic masts, hydraulic leveling, ducted HVAC, and NeverDown™ power with supplemental solar panels. Nomad Total Command™ (NTC) enables advanced asset automation and control, ensuring reliable, autonomous field operation.



FEATURES //

- Nomad Tactical Command Trailer – Heavy Duty (TCT-HD) Dual-Axle Aluminum Chassis
- Engineered to Meet Air Transportability Test Loading Activity (ATTLA) Requirements
- Hydraulic Leveling System
- Nomad Total Command™ (NTC) Asset Automation + Control
- Lift-and-Lay Telemetry Antenna
- 30' Pneumatic Mast
- NeverDown™ Power Management with 2 Deployable 320W Solar Panels
- Ducted HVAC for Equipment Thermal Management
- 3-Unit Order

Delivery Date:
9/19/25

U.S. ARMY CORPS OF ENGINEERS

EMERGENCY COMMAND AND CONTROL VEHICLE



MISSION // The U.S. Army Corps of Engineers (USACE) Deployable Tactical Operations System (DTOS) is a national system that provides tactical operations and communications support for emergency response missions. Emergency Command and Control Vehicles (ECCVs) are a key component of the DTOS response platform ecosystem.

SOLUTION // Following on the success of Nomad GCS's first-generation Emergency Command and Control Vehicles (ECCVs), Nomad designed, manufactured, and integrated six second-generation ECCVs. Engineered to meet ATTILA air transportability requirements, the 34-foot custom shelters feature four flat floor slideouts, advanced communications including LEO satellite, LMR, and A/V systems, 40-foot pneumatic mast, and Nomad Total Command™ (NTC) automation. 20kW of generator power and efficient integrated workspaces support extended operations during emergency deployments.

FEATURES //

- Freightliner 114SD Chassis
- Engineered for Air Transportability Test Loading Activity (ATTILA) Requirements
- 34' Custom Shelter with Four Flat Floor Slideouts
- Non-Skid Roof with Fall Protection and Access Ladder
- Nomad Total Command™ (NTC) Asset Automation + Control
- 40' Pneumatic Mast with PTZ Camera
- Kymeta Hawk LEO Satellite Antenna
- A/V Package, Cell Booster, and Satellite Phone
- Integrated LMR Equipment in Cab and Shelter
- Cummins Onan 20kW Generator
- Conference Table with Pop-Up Data and Power
- 6-Unit Order

Delivery Date:
5/28/2025



[CONFIDENTIAL CUSTOMER]

RF MONITORING, DIRECTION FINDING, & ANALYSIS VEHICLE



MISSION // [Confidential Customer] provides federal and defense test range mission support in austere environments. Platform mobility over unimproved roads, extended deployment distances, and harsh testing conditions necessitated ruggedized protection and security for sensitive electronics used in realistic testing environments.

SOLUTION // Nomad GCS designed and manufactured a specialized solution with rough-terrain capabilities to bring test equipment to locations with unimproved access. Nomad engineered a custom-modified mechanical mast with e-Chain cable management system to elevate the customer's monitoring equipment. Electronics equipment racks are easily accessible for mission equipment configuration changes via a locking exterior access door. Nomad Total Command™ (NTC) asset automation provides one-touch operation for HVAC and generator equipment.

FEATURES //

- Ford F-450 4x4 Crew Cab Chassis
- All Terrain Suspension with Super Single Conversion
- Custom Shelter with Roof Platform for Test Equipment Access
- Nomad Total Command™ (NTC) Asset Automation + Control
- Electronics Racks with Locking Exterior Door Access
- Prepped for Customer Supplied Test Equipment
- Starlink™ Equipped
- External Data I/O Panel for Local Connections
- Mechanical Mast with e-Chain Cable Management
- Dual Rooftop HVAC Units
- 12kW Cummins Onan Generator
- Repeat Customer for Multiple Units

Delivery Date:
8/22/25



CHEROKEE NATION

MOBILE COMMAND POST

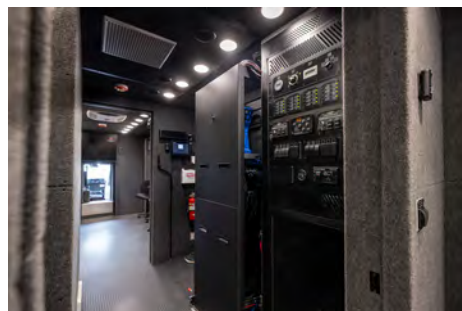
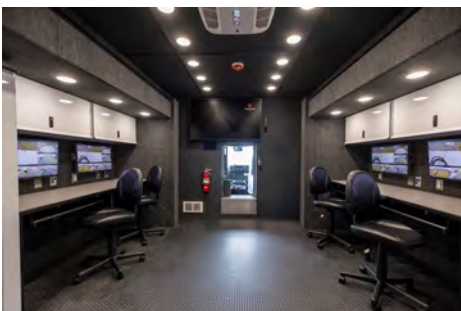


MISSION // The Cherokee Nation Emergency Management (CNEM) team is a part of the Cherokee Nation Marshal Service. CNEM facilitates the tribe's incident operations capabilities by responding to emergencies and coordinating tribal response activities among towns, counties, the State of Oklahoma, and federal disaster response resources.

SOLUTION // Nomad GCS designed, manufactured, and integrated this advanced Mobile Command Post built on a Freightliner 114SD chassis. It supports large teams of people in a 34-foot shelter with four flat-floor slideouts, three functional workspaces, conference and galley areas, lavatory, and an exterior briefing workstation. A 20kW generator, pneumatic mast with PTZ camera, roof-mounted light tower, LED emergency lighting with siren, automatic leveling, and dual exterior awnings support field-ready performance.

FEATURES //

- Freightliner 114SD Chassis with Automatic Leveling System
- 34' Shelter with 4 Flat-Floor Slideouts
- Exterior Workstation with Monitor
- 20kW Cummins Onan Generator
- 40' Pneumatic Mast with PTZ Camera
- LED Emergency Lighting with Siren
- Roof-Mounted Light Tower
- Dual Horizontal Arm Exterior Awnings
- 3 Rooms with Workstations, Conference Area, Galley, and Lavatory



Delivery Date:
11/4/2025

FEDERAL EMERGENCY MANAGEMENT AGENCY

MOBILE COMMUNICATIONS OFFICE VEHICLE (MCOV)



MISSION // The Federal Emergency Management Agency (FEMA) developed requirements for a second-generation Mobile Communications Office Vehicle (MCOV), designed as part of a rapid deployment system to respond to disasters, emergencies, or special events in support of victims and disaster management teams. The MCOV deploys in challenging conditions and is self-sustaining for extended operations.

SOLUTION // Nomad GCS designed and manufactured next-generation Mobile Communications Office Vehicles (MCOVs) built on an International CV515 SFA chassis. These units are engineered for Air Transportability Test Loading Activity (ATTLA) certification and harsh operating conditions. With four operator positions available, they feature preconfigured radio and VSAT provisions, dual HVAC units, galley amenities, an automatic leveling system, and an 8kW generator. Units were produced under a Blanket Purchase Agreement (BPA), with 27 units delivered or on order.

FEATURES //

- International CV515 SFA Chassis
- Automatic Leveling System
- Engineered for Air Transportability Test Loading Activity (ATTLA) Requirements
- Preconfigured for Client Radios and VSAT Antenna Installation
- Galley with Microwave + Refrigerator
- Dual Redundant HVAC Units
- Cummins Onan 8kW Generator
- Interior and Exterior LED Lighting
- Automatic Awning
- Blanket Purchase Agreement, 27 Units Delivered or On Order



Delivery Date:
Beginning 7/27/2020

[CONFIDENTIAL INTERNATIONAL CUSTOMER]

DRONE OPERATIONS VEHICLE



MISSION // This customer partnered on an international program to deliver a family of mobile drone platforms centered on the AeroVironment JUMP 20 UAS solution. Rugged operating terrain and tough access roads drove the need for an agile and capable UAS mobile ops platform supporting surveillance and investigation operations.

SOLUTION // Nomad GCS designed, manufactured, and integrated this rugged UAS operations platform built on a Ford F-550 4x4 chassis. With custom suspension and super single upgrades, the vehicle is engineered for challenging terrain and remote missions. Key operational features include JUMP 20 drone support and Troll Systems antenna integration, Kymeta satellite data, a 14-foot mechanical mast, and interior / exterior workstations. Nomad Total Command™ (NTC) handles systems automation for robust 12kW PTO power and dual climate control systems.

FEATURES //

- Ford F-550 4x4 Chassis
- Automatic Leveling System
- Custom Ruggedized Suspension with Super Single Upfit
- Nomad Total Command™ (NTC) Asset Automation + Control
- Exterior Swing-Out Briefing Monitor
- JUMP 20 Drone Support and Troll Systems Antenna Integration
- Kymeta Satellite Data
- 14' Mechanical Mast
- Dual Rooftop HVAC
- 12kW PTO Generator
- Part of 12-Unit Multi-Platform Project

Delivery Date:
11/21/2025



SCHOOL-BASED HEALTH CENTER

MOBILE MEDICAL VEHICLE



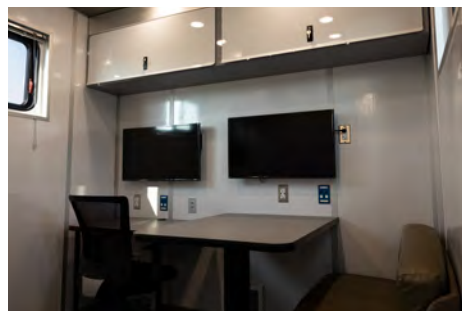
MISSION // New Mexico's School-Based Health Center (SBHC) / Managed Care Organization (MCO) Project enables mobile clinics to be positioned on or near school grounds. This mobile unit provides physical and behavioral health services to vulnerable, hard-to-reach, and at-risk children and adolescents in rural and medically underserved areas of New Mexico.

SOLUTION // Nomad GCS designed, manufactured, and integrated this well-equipped Mobile Medical Vehicle. Built on an International Merit MV607 chassis, it features an exam room with lab area, separate behavioral health room, ADA-compliant restroom, and wheelchair lift. Mission-enhancing solutions include Nomad Total Command™ automation, a medical-grade refrigerator, and a Cummins Onan 12kW generator, ensuring reliable and efficient mobile operation for comprehensive patient care. Part of a two-unit order.



FEATURES //

- International Merit MV607 Chassis
- Automatic Leveling System
- Exam Room with Exam Table and Lab Area
- Separate Behavioral Health Room
- Wheelchair Lift
- Restroom with ADA-Compliant Toilet and Hot Water Heater
- Medical-Grade Refrigerator
- Nomad Total Command™ (NTC) Asset Automation + Control
- Cummins Onan 12kW Generator
- Two-Unit Order



Delivery Date:
7/31/2024

JT4 LLC

TELEMETRY CONTROL VEHICLE



MISSION // JT4 LLC serves the U.S. Air Force Utah Test and Training Range (UTTR) by providing highly specialized scientific, engineering, technical, and support services. Mission tasks required a transportable solution that provides Flight Termination System (FTS) and Telemetry (TM) range coverage in remote and austere areas of the UTTR airspace not covered by existing fixed sites.

SOLUTION // Nomad GCS designed, manufactured, and integrated this telemetry control vehicle for UTTR missions. Built on a Ford F-550 4x4 crew cab chassis and engineered to meet ATTLA air-transportability requirements, it combines rugged mobility with a mission-specific shelter design, generator power, HVAC systems, and Nomad Total Command™ (NTC) automation. An integrated telemetry antenna system pairs with rack space for test electronics. The solution enables rapid deployment and reliable range operations beyond fixed-site coverage.

FEATURES //

- Ford F-550 4x4 Crew Cab Chassis
- Super Single Conversion with Ruggedized Suspension Package
- Engineered for Air Transportability Test Loading Activity (ATTLA) Specifications
- Custom 14' Aluminum Shelter with Roof Antenna Access Door
- Telemetry Antenna on Cab Roof Platform with Support Exoskeleton
- Nomad Total Command™ (NTC) Asset Automation + Control
- 4 Equipment Racks for Test Electronics
- Cummins Onan 12kW Generator
- Dual Roof-Mounted HVAC
- Interior and Exterior LED Lighting
- Situational Awareness Cameras
- Exterior Automatic Awning

Delivery Date:
12/10/2025



ALABAMA EMERGENCY MANAGEMENT AGENCY

MOBILE COMMAND VEHICLE



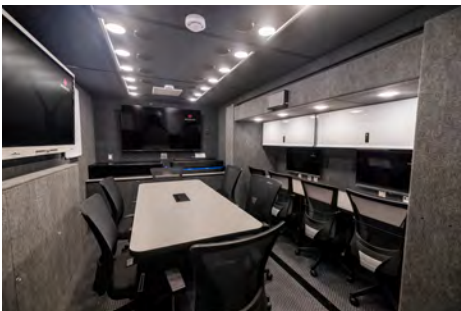
MISSION // The Alabama Emergency Management Agency (EMA) plans, coordinates, and responds to all emergency and disaster events in the State of Alabama. Alabama EMA required a capable mobile command solution for statewide response in support of Alabama state agencies and partner organizations at incidents.

SOLUTION // Nomad GCS designed, manufactured, and integrated this Mobile Command Vehicle to support the Alabama EMA's statewide mission. Built on a Freightliner M2-106 Plus chassis with a 26-foot aluminum shelter and dual slideouts, the platform delivers a fully self-sustaining, two-room command environment. Integrated power, HVAC, communications, and situational-awareness systems are automated by Nomad Total Command™ (NTC) for rapid deployment to emerging and ongoing incidents.

FEATURES //

- Freightliner M2-106 Plus Chassis
- 4-Point Automatic Leveling System
- 26' Aluminum Shelter with 2 Flat-Floor Slideouts
- 2-Room Layout with Workstations and Conference Table
- Nomad Total Command™ (NTC) Asset Automation + Control
- Custom Integration of Customer-Supplied Network and A/V Equipment
- Weatherproof Exterior Workstation with Monitor
- 26' Pneumatic Mast with PTZ Camera
- LED Light Tower
- Cummins Onan 20kW Generator
- 3 Roof-Mounted HVAC Units
- Exterior Horizontal-Arm Awning
- LED Warning and Scene Lighting

Delivery Date:
12/16/2025



VERIZON

INCIDENT RESPONSE TEAM VEHICLE

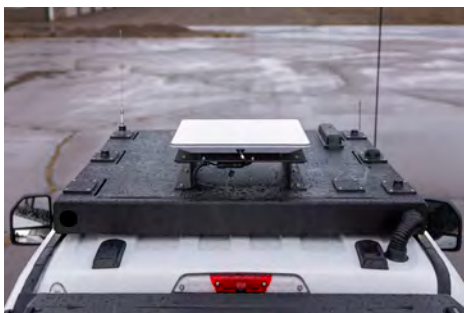


MISSION // When events impact Verizon Wireless' network operations, its Major Emergency Response Incident Team (MERIT) goes into action to resolve problems and get customers back online. On-call personnel needed upfitted vehicles to deploy from home and after hours with a full suite of connectivity and communications equipment and tools.

SOLUTION // Nomad GCS upfitted and integrated two response vehicles on Ford F-350 4x4 chassis. The platforms incorporate robust radio and data connectivity, Starlink-enabled mobile broadband, and organized storage for critical tools and equipment. Enhanced lighting, off-pavement capability, and self-contained communications ensure responders can quickly reach affected areas and restore network operations under demanding conditions.

FEATURES //

- Ford F-350 4x4 Chassis
- Radio and Data Connectivity Integration
- Custom Cab Roof Rack with Starlink Antenna
- LED Emergency and Scene Lighting
- Expedition Topper with Decked Bed Drawers and Slide
- Front Winch Bumper
- 2-Unit Order



Delivery Date:
12/15/2025