

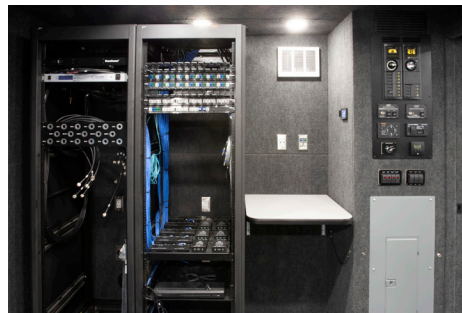
# FEDERAL EMERGENCY MANAGEMENT AGENCY

## NEXT GENERATION MOBILE EMERGENCY OFFICE VEHICLES (MEOVS)



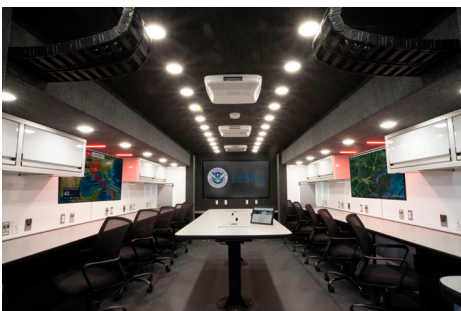
**MISSION //** The Federal Emergency Management Agency (FEMA) has Mobile Emergency Response System (MERS) detachments located throughout the country, tasked with deploying to emergency and national security incidents. MERS units were equipped with first generation Mobile Emergency Office Vehicles (MEOVs) nearing the end of their service lives. Lessons learned from field operations and advances in information technology drove improvements sought in next-generation MEOVs.

**SOLUTION //** Nomad GCS designed, manufactured, and integrated next-generation Mobile Emergency Office Vehicles (MEOVs) for FEMA MERS detachments. The custom shelters incorporate features such as three flat-floor slideouts and Nomad Total Command™ automation. Equipped with advanced communications packages, a 1.2M satellite antennas, pneumatic masts, 12 operator workstations, and exterior briefing monitors, these MEOVs enhance emergency response capabilities. A five-year blanket purchase agreement has been established, with nine units ordered as of 2024.



### FEATURES //

- Freightliner 114SD Chassis
- 3 Flat-Floor Slideouts
- Nomad Total Command™ (NTC) Asset Automation + Control
- AvL 1.2M Satellite Antenna
- 12 Operator Workstations
- Exterior Briefing Monitor
- Pneumatic Mast
- Cummins Onan 20kW Generator
- 5-Year Blanket Purchase Agreement, 9 Units Ordered as of 2024



**Delivery Date:**  
6/25/2021 – 9/24/2022