

U.S. ARMY REDSTONE TEST CENTER

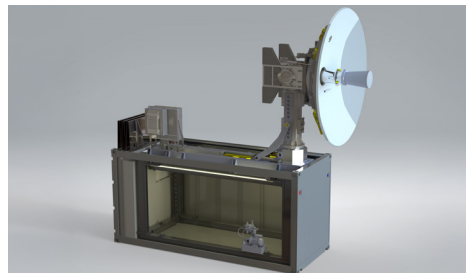
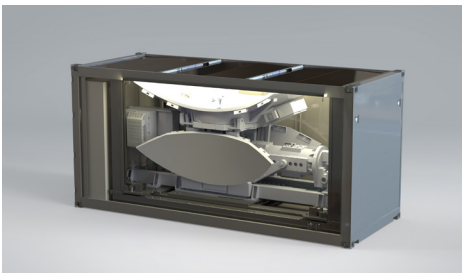
MODULAR OPEN SYSTEM ARCHITECTURE INSTRUMENTATION CONTAINER (MOSAIC) PROGRAM



MISSION // The U.S. Army's Redstone Test Center (RTC) conducts missile evaluation operations in the Broad Ocean Area (BOA) test range. To meet U.S. Coast Guard (USCG) and Military Sealift Command (MSC) requirements for occupied enclosures while at sea, RTC and Nomad GCS developed unique solutions for a compliant, modular, containerized testing ecosystem.

SOLUTION // Nomad GCS designed, manufactured, and integrated this family of 20- and 40-foot ISO 668 containers for the RTC Modular Open System Architecture Instrumentation Container (MOSAIC) Program. The 40-foot Backend and Command and Control (C2) modules are specifically engineered to meet American Bureau of Shipping (ABS) and USCG Portable Accommodation Module (PAM) requirements for occupied enclosures and have between four and seven operator positions, depending on configuration.

The 20-foot Frontend telemetry modules feature innovative, automatically opening roofs with a hydraulic lift system capable of elevating 12,000 pounds to deploy sensors and antennas. Nomad Total Command™ (NTC) automates and monitors container functions including marine-grade redundant HVAC systems and the ABS-approved NeverDown™ power storage and management system for efficient operations.



FEATURES //

- 20' and 40' Purpose-Built ISO Containers
- Portable Accommodation Module (PAM) Certified
- International Convention for Safe Containers (CSC) Certified
- Nomad Total Command™ (NTC) Asset Automation + Control
- ABS-Approved NeverDown™ Power Management System
- Four to Seven Operator Positions in Backend and C2 Modules
- Automated Roof Opening and Sensor Lift in Telemetry Modules
- Marineized, Dual-Redundant HVAC Systems
- Designed to DARPA's Modular Open Systems Approach (MOSA) standards
- Marineized Pneumatic Mast

Delivery Date:
Beginning January 2025



Step Inside:
A Virtual Tour
at Your Fingertips