

INSPECTION + MAINTENANCE PLANS



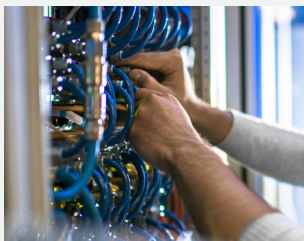
Mobile assets are a critical component of your operations. Downtime can be inefficient, costly, even dangerous, making the mandate for operational readiness clear. There's never been a single, trusted partner for asset care... Until now.

THE CHALLENGES

Mobile assets integrate many complex systems. Maintenance is often spread out between several vendors, creating logistical burdens and extra expense. Assets can also sit—unused and unchecked—for long periods, accelerating wear, causing issues on deployment, and reducing service life. Add to all this the Fleet Manager's growing list of responsibilities (and shrinking resources), and the need for a better way is evident.

ONE-STOP ASSET CARE

Mobile Asset Service Solutions by Nomad GCS solve service challenges. Our team is an extension of yours: One contact for recurring inspections and preventative maintenance, with tiered pricing that adapts to any fleet. Nomad's two decades of experience building and servicing mobile assets for defense, public safety, telco, healthcare, and more equip us to handle it all: Any asset, any manufacturer, any time, any place.



- ✓ COMMUNICATIONS
- ✓ IT SYSTEMS
- ✓ ELECTRICAL + POWER
- ✓ MECHANICAL
- ✓ CAMERA + SENSOR

COMMAND CHECK™

ASSET INSPECTION + READINESS ASSESSMENT

Sporadic, disjointed inspections are a thing of the past. Regular *Command Check* assessments by Nomad GCS ensure mission-ready status for your critical assets. You'll understand the complete operating picture and stay ahead of issues. Our team will:

- Inspect all systems, bumper-to-bumper and ground-to-mast
- Generate a readiness report and prioritize issues found
- Estimate remedy costs and conduct necessary service work



COMMAND CARE™

ASSET MAINTENANCE PLANS FOR EVERY MISSION

Command Care maintenance plans by Nomad GCS eliminate vendor management hassles and concerns about consistency and quality. Our distributed team of Field Service Technicians (FSTs) will service, repair, and retrofit. You'll select from three flexible plans:

- **Silver:** Service on a schedule. Materials, FST time billed separately
- **Gold:** Silver benefits, plus a discounted block of FST time
- **Platinum:** Gold benefits, plus Nomad Portal™, ad-hoc service



Nomad Portal™ helps organizations understand fleet health and track service schedules. Couple with **Nomad Total Command™** (NTC) for asset automation, remote deployments, and intelligent connectivity.



WHEN EVERY MINUTE MATTERS
NOMADGCS.COM + 888.755.1721