

2002



## HOW IT ALL BEGAN

In the early 2000's, Will and Seth Schmautz, Shane Ackerly, and Clay Binford are spending summers guiding raft trips. As the season winds down, wildfires typically kick up, and the guide company employs its buses to transport firefighters. While working in this effort, the four notice a lack of connectivity on fire lines. Seeing an opportunity to serve, they cobble together funds to build an Internet-enabled comms trailer. In 2002, with off-the-shelf electronics and a lot of ingenuity, "Nomad 1" comes to life in an old, dirt-floored barn with a leaky roof. Today, Nomad builds *Connected Mobile Operations Centers (CMOC's)* for a global customer base. Same spirit of service... Better roof

2005



## MILESTONE

First engineered-to-order custom solution. Eagle County, CO



## IN SERVICE

JP's Environmental Technologies command trailer deploys to assist in Hurricane Katrina cleanup and restoration projects

2006



## MILESTONE

First federal Engineer-to-Order (ETO) contract. Three command trailers for U.S. Fish and Wildlife Service

2007



## MILESTONE

First Department of Defense contract – Two best-in-class education trailers, with Nomad developed *Bi-Directional Briefing Screen Technology*, for U.S. Army Master Gunner Program



2009



## MILESTONES // TOP, NTC, INTELLIGENT ROUTING

Modern warfighters and disaster responders need seamless connectivity between assets and organizations. Recognizing this need, Nomad develops *Total Operating Picture (TOP)*, an integrated C4ISR solution set that gives comprehensive mission views and unified control. In parallel, the first releases of *Nomad Total Command (NTC)* and *Intelligent Routing* are launched, bringing a software and user interface layer, plus data-driven, automated networking to the TOP suite

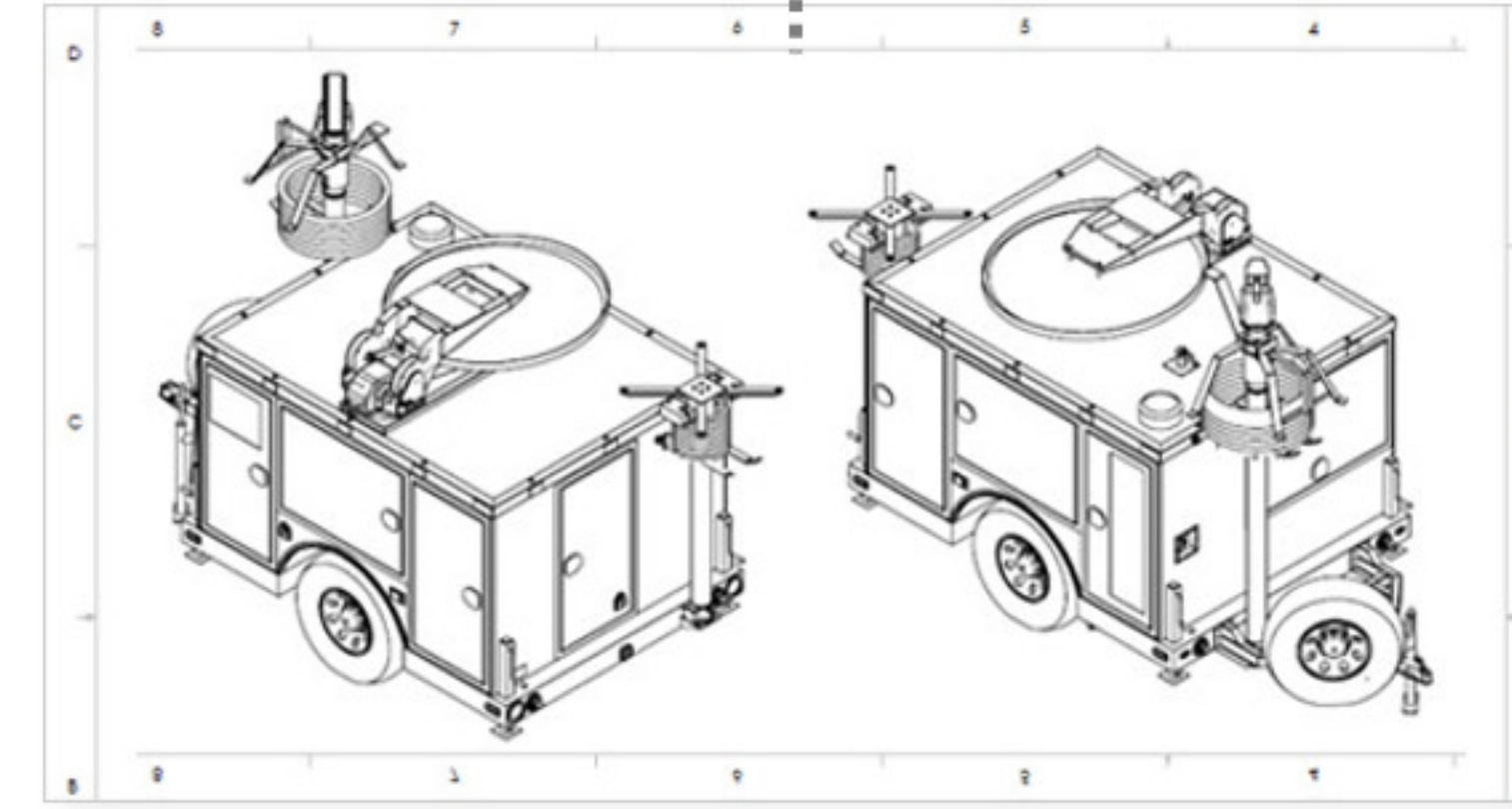
2010



## MILESTONE

U.S. Army Corps of Engineers (USACE) 18-vehicle contract. A fleetwide approach utilizing *NTC* boosts deployment efficiency. Formerly: 6 operators, 6 hours. Now: 1 operator, 5 minutes

2011



## MILESTONE

Completion of the first *Tactical Communications Trailer (TCT)*, packing big comms horsepower into a compact package



## IN SERVICE

With 60% of its controlled land having no connectivity, *TCT* is critical to the Bureau of Indian Affairs (BIA) ecosystem

2012



## MILESTONE

*NTC v2.0* launches. Any user, regardless of training, can now easily monitor and manage assets with safety and security

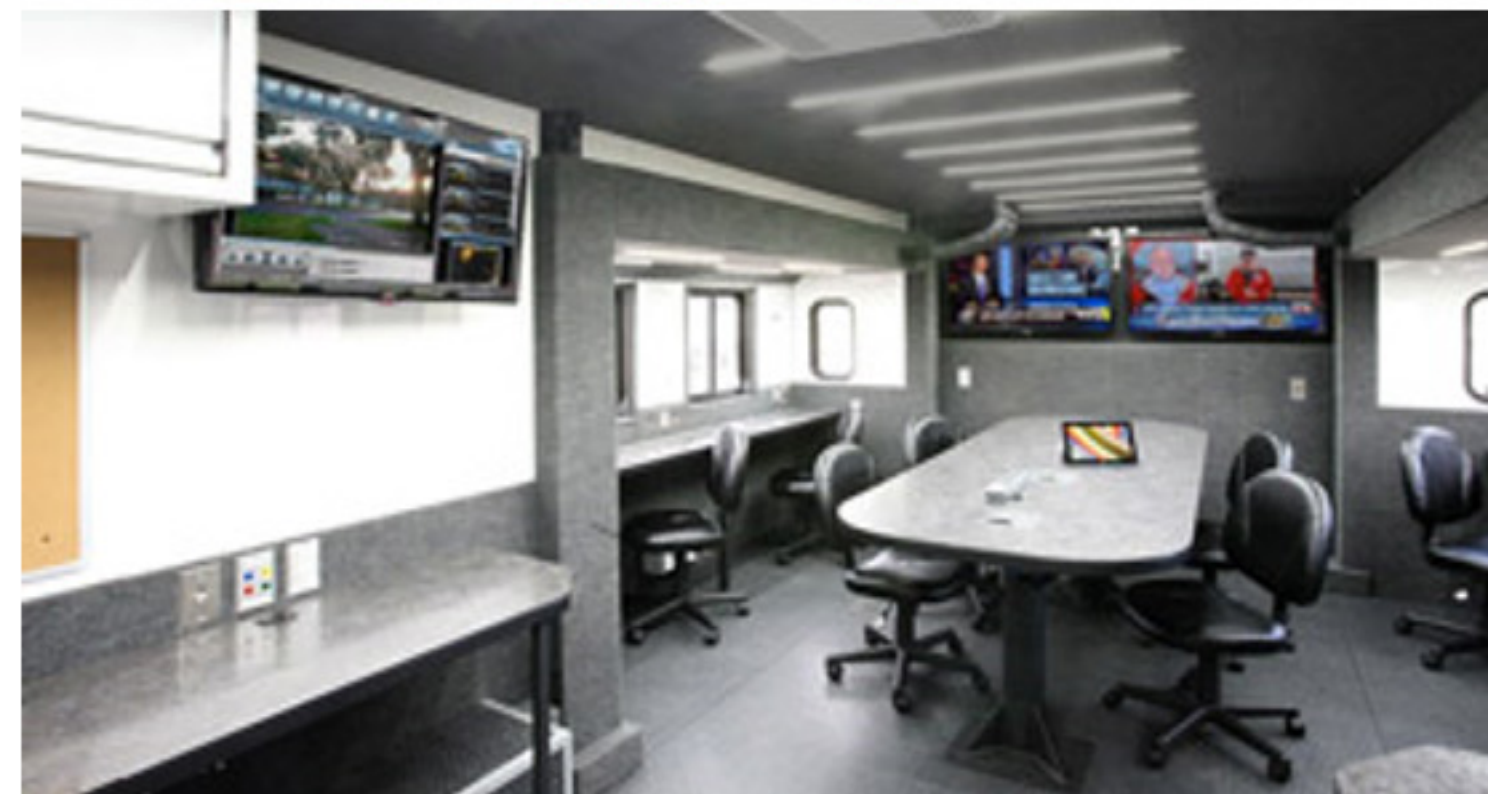
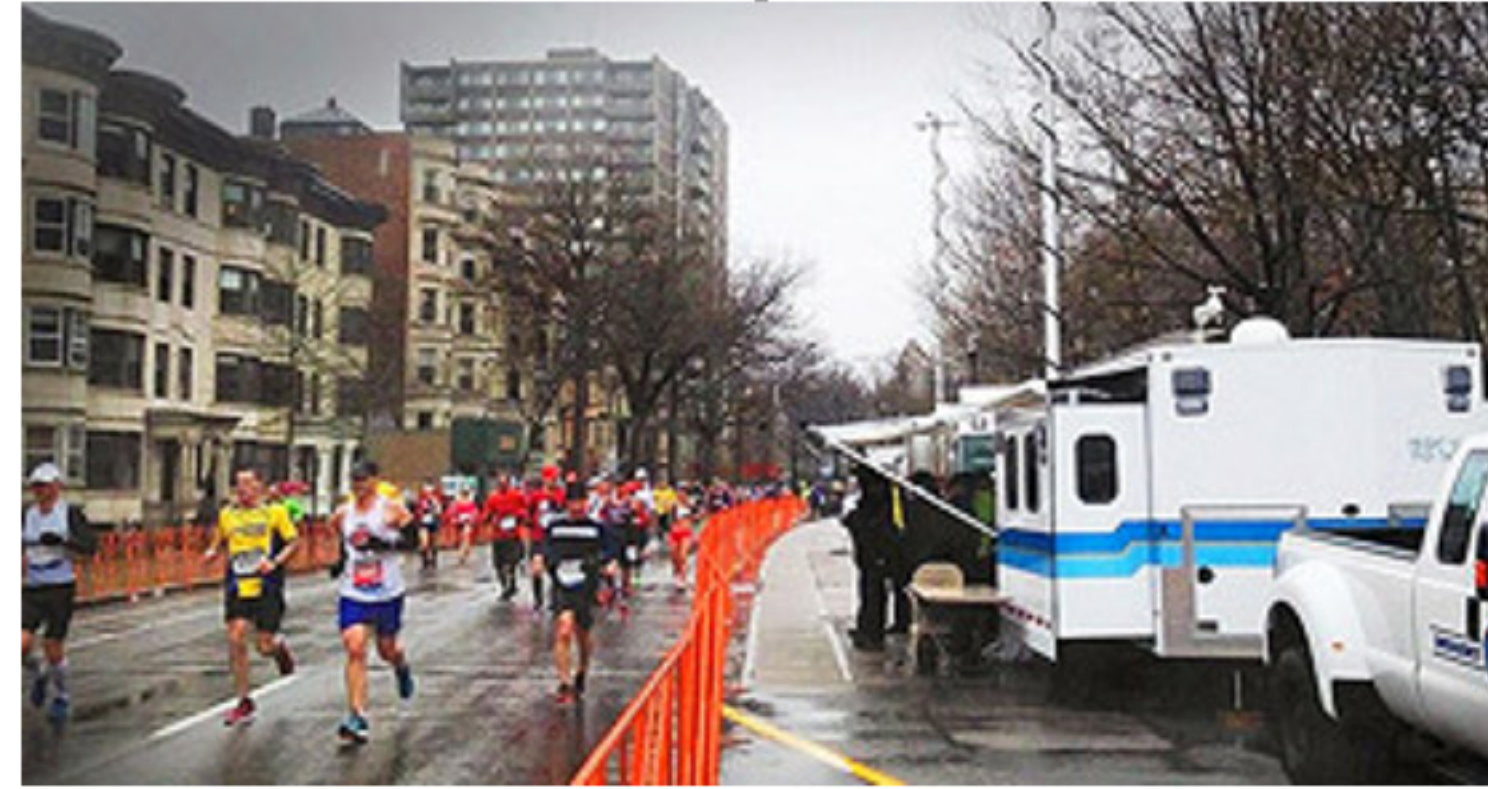


## IN SERVICE

USACE assets are critical to un-watering missions, operating 24 hours a day for over 60 days in NYC after Hurricane Sandy



2013



## IN SERVICE

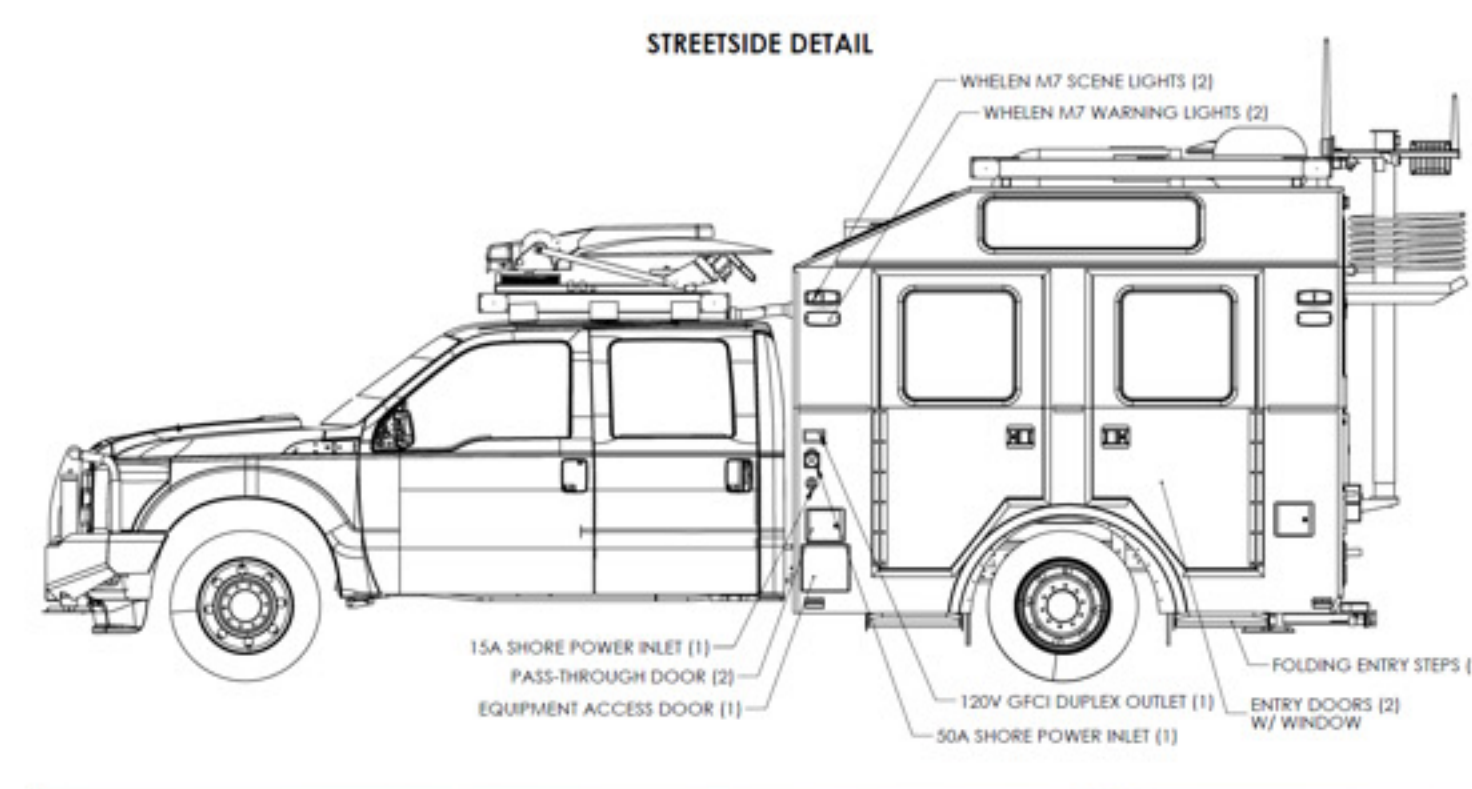
Following the Boston Marathon bombings, communications networks are stressed. The Massachusetts Emergency Management Association (MEMA) deploys Nomad-built command trailers (initially being used assist in race management). Quickly transition assets to manage EMS teams to stay connected and operational

2014



## MILESTONE

Naval Air Systems Command (NAVAIR) contract for 75 EMI-shielded vehicles with Tempest-rated shelters. Nomad's first major sub-contract for a Program of Record (POR)



## MILESTONE

Nomad and BIA collaboratively design an all-new concept in mobile operations, the *Tactical Command Vehicle (TCV)*. Along with its TCT's (see 2011), the agency's initial fleet order brings critical connectivity to under-served areas

2016



## MILESTONE

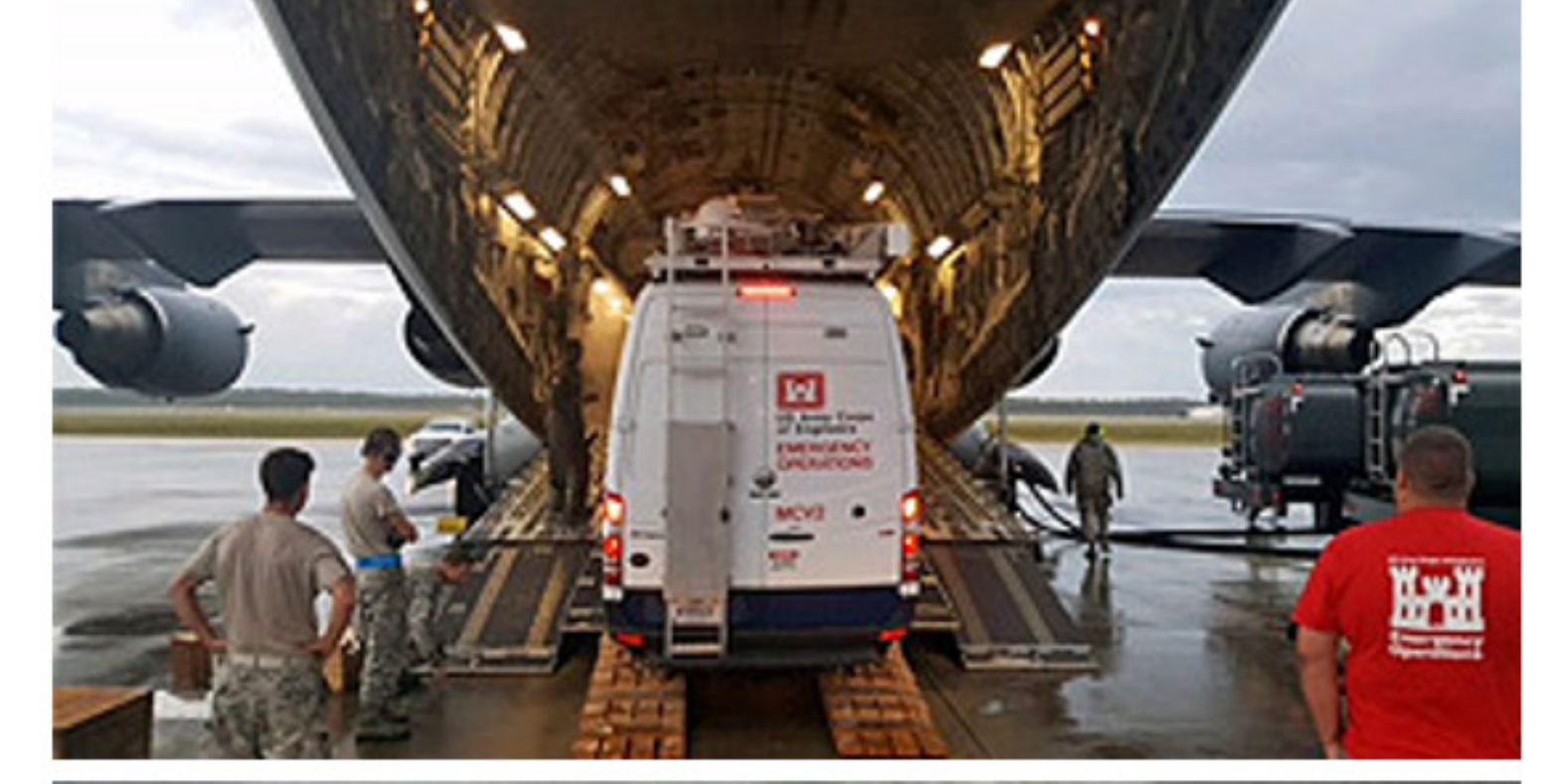
Newly-designed *Heavy Duty Tactical Comms Trailer (TCT-HD)* rolls into service for the Los Angeles Port Authority. More payload and tech capacity



## MILESTONE

First Nomad solutions delivered to the Middle East and Central America

2017



## IN SERVICE

Nomad-built solutions serve in every storm of the disastrous 2017 hurricane season. *ATTLA-certified MCV's* deploy quickly to islands. High-clearance *TCV's* ford flooded roads to run comms at makeshift shelters and medical facilities



2018



### MILESTONE

Invention of *mobilized power routing systems* with Smart Wires, Inc.



### MILESTONE

Suite of integrated solutions delivered to U.S. Army European Command (EUCOM), including *TCV*, *TCT*, and *TCV-ET (Emergency Transport)*

2019



### MILESTONE

Launch of *TCV-X*, with single-cab chassis and larger, re-configured command shelter



### MILESTONE

First purpose-built UAS (drone) command vehicle, delivered to Menlo Park Fire



### MILESTONE

*Nomad Total Command (NTC)* hits version 3.0 with stunning new features and an enhanced logging and analytics

2020



### MILESTONE

Mobile telemetry vehicles and trailers delivered to U.S. Air Force (Eglin AFB)



### MILESTONE

*TCV-Max* launches. The ultimate platform for go-anywhere mobile operations and communications



### MILESTONES // NASA, CISCO, HYBRIDIZED POWER

Connected Mobile Operations Centers delivered to NASA and Cisco. Equipped with Nomad's *NeverDown™ Hybridized Power and HVAC*... Resilient energy conversion, storage, and transfer with seamless transitions between battery and engine power sources. Future-ready power for mobile ops arrives

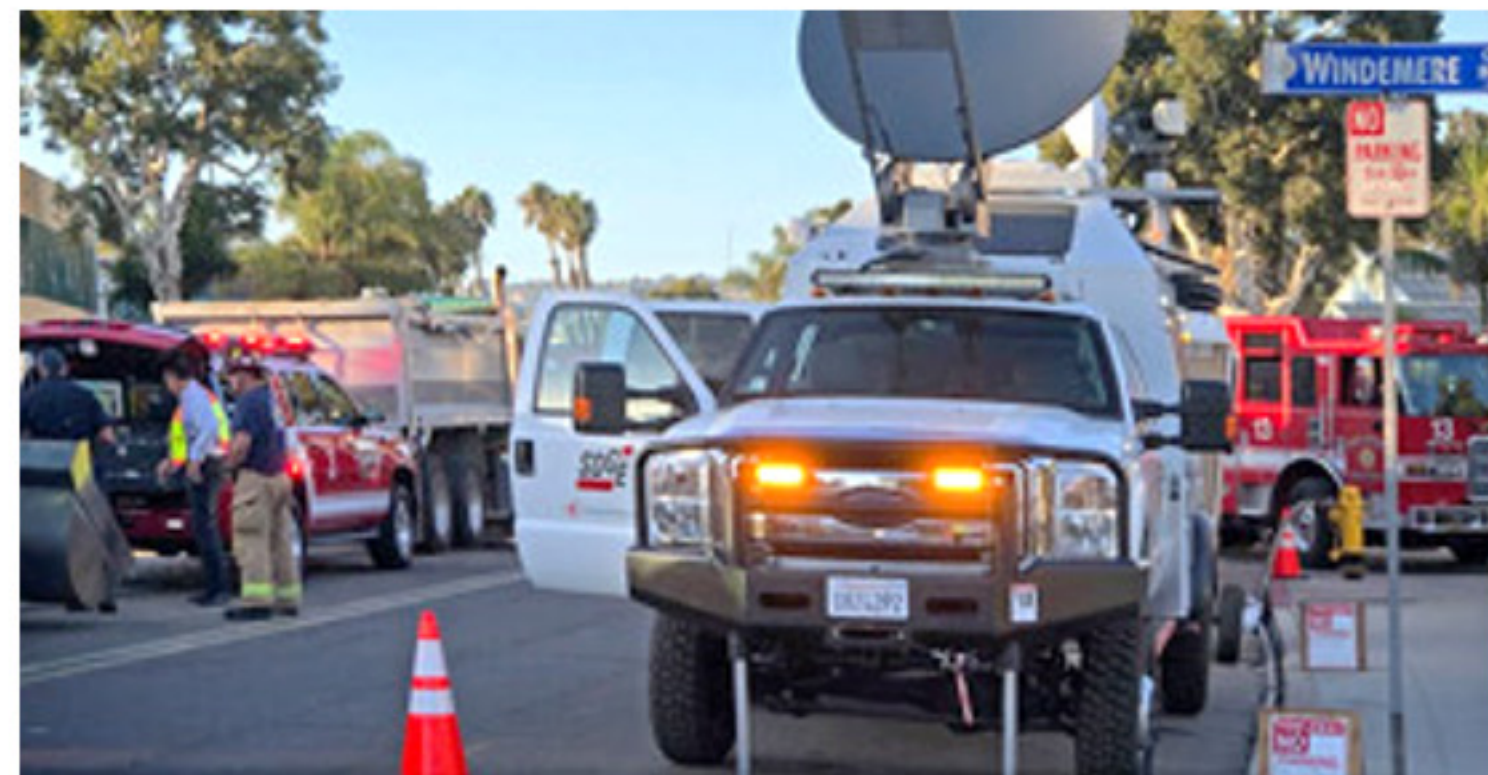


2020

2021

2022

2023



### MILESTONE

Nomad ships state-of-the-art, SCIF-rated mobile telemetry vehicles to the U.S. Air Force (Edwards AFB). Also secures IDIQ contract with [Nellis AFB](#)



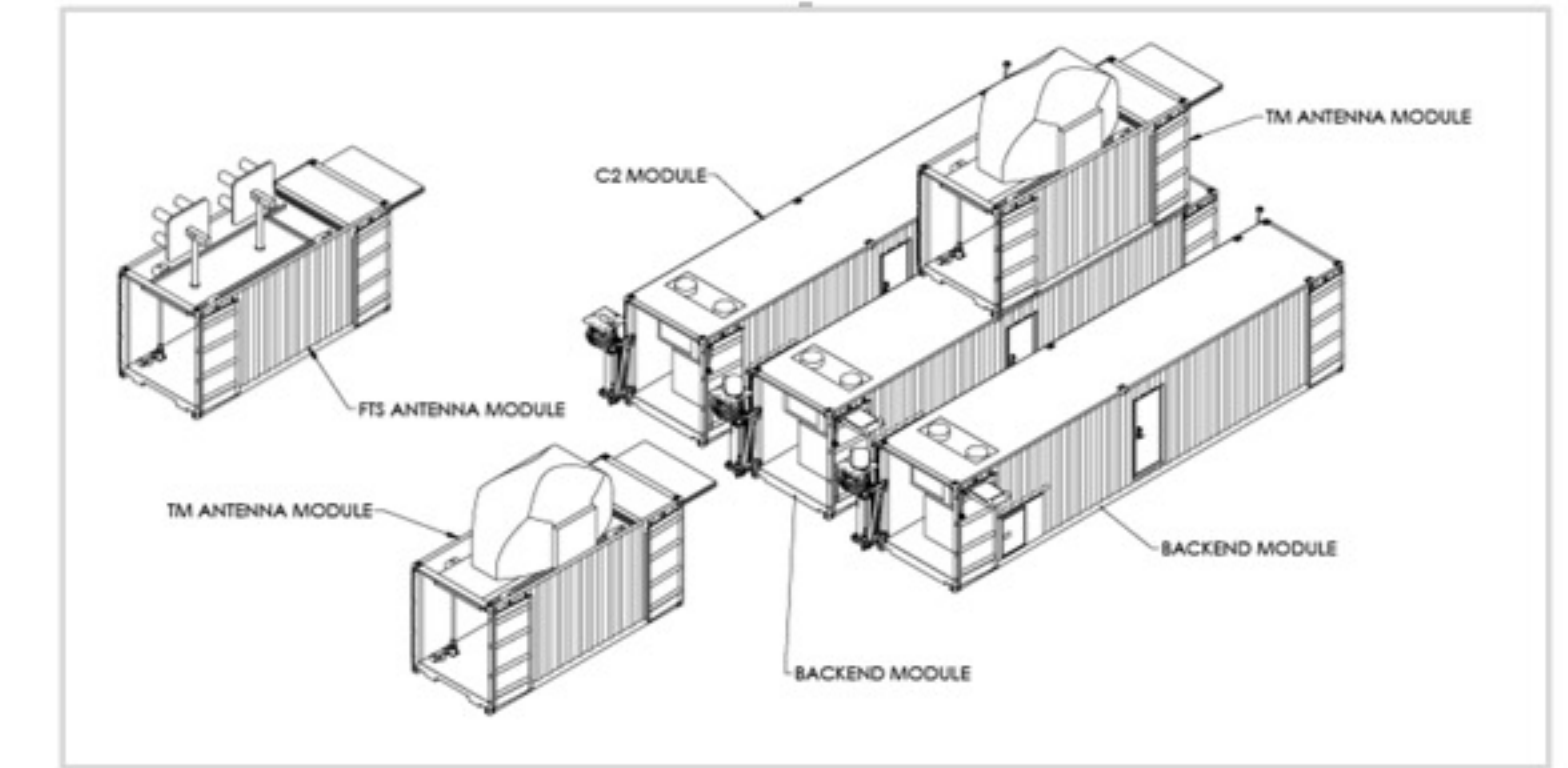
### MILESTONE

5G-connected command center delivered to Verizon. Earns wide acclaim, opening opportunities with telcos like T-Mobile



### MILESTONE

Shipped first mobile SCIF-rated "Multi-Utilization Secure Tactical And Network Ground Stations" (MUSTANGS) to [Nellis AFB](#). Supports Air Force-wide initiative



### MILESTONE

Selected by Redstone Test Center to co-develop *MOSAIC*, a ship-based containerized telemetry system to serve the Pacific Range

### IN SERVICE

San Diego Gas & Electric (SDG&E) engages in a full-fleet partnership, co-developing innovative vehicles and trailers with Nomad. Pictured above, an SDG&E TCV responds to a gas pipeline break



### MILESTONE

Exclusive licensing of [Axleless® Suspension Technology](#), enabling extremely low-floor trailers



### MILESTONE

Two FEMA BPA contracts awarded, for numerous mobile ops assets



### MILESTONE

Capacity expands. New, 100,000 sq. ft. Libby, MT plant runs van and containerized solution lines



### MILESTONE

Selection as Dell Technologies OEM Solutions partner, opening global sales force. Co-develop Zero-Trust mobile data centers